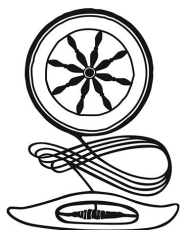


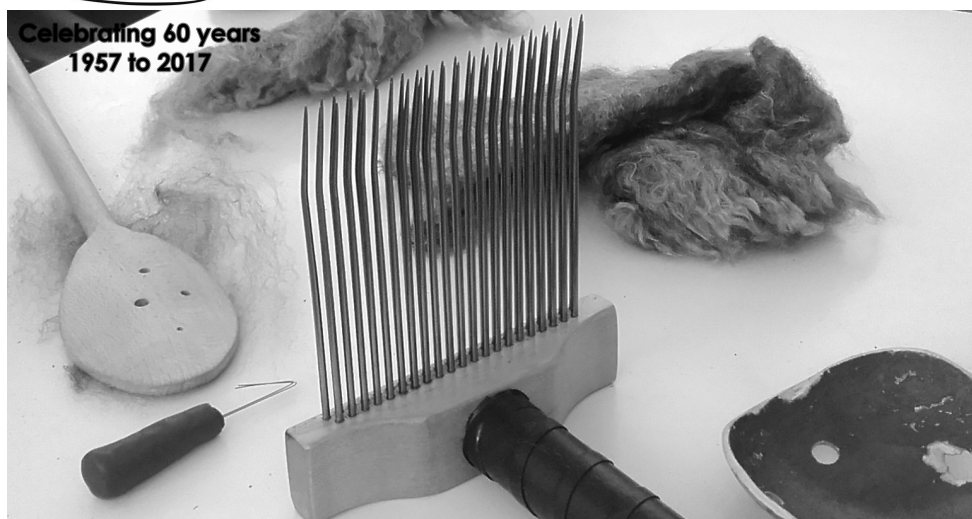
The YarnSpinner



Newsletter of the Handweavers', Spinners'
and Dyers' Guild of Western Australia

Volume 47 No. 08

September 2017



Celebrating 60 years
1957 to 2017

Coming up....

Saturday 9 September 2017: Guild Showcase: Diamonds and Gems

- 09:30** Doors open
- 10:00-10:30** Entries received - NO entries accepted after 10:30
- 11:00-11:45** General Meeting
- 12:00** Soup Time
- 12:30-12:45** Popular Choice voting
- 13:00** Award announcements

Coffee and tea provided, soup will be served for lunch.

**Contribution deadline the October edition of the
YarnSpinner: Saturday 9 September 2017**

DISCLAIMER: Opinions expressed in correspondence in this newsletter are not necessarily those of the Guild

Alexander Park Craft House Guild Groups

SPINNING GROUP: 4th Saturday of each month from 10am

Beginners welcome. Library and Yarn Area open. Bring your spindle or spinning wheel, your latest project, and lunch. Coffee and tea provided. Guild equipment including hand & drum carders, spinning wheels, electric wheels and dye equipment is available for use by members. Contact Information Officer (details page 15).

IN-HOUSE WEAVERS: 2nd & 4th Tuesday of the month from 9:30am

Anyone is welcome to join us! Contact Brenda Roy 9381 4870 or brenda@cadplan.com.au

TAPESTRY GROUP:

Contact Stephnie Cantoni stephniecantoni@bigpond.com or Jan Hunter wsf.jmhunter@bigpond.com.

Guild Membership Fees for 2017

Full \$40.00

Pensioner \$30.00

Associate \$30.00

Student \$30.00

Family—\$65.00

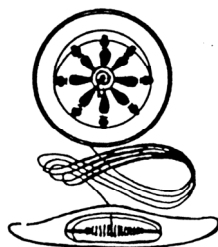
Group—\$45.00

Renewing Members: If renewing by mail, please include renewal form (or name, postal address and phone no.) and a stamped self-addressed envelope for return of your receipt and name badge. Half fees apply after 1st July, those joining after 1st October have the option to pay in full which then includes membership for 2018.

New members: For info on joining contact Membership Officer (details page 15).

**HANDWEAVERS', SPINNERS' AND DYERS' GUILD
OF WESTERN AUSTRALIA INC**
Celebrating 60 years 1957 to 2017

Alexander Park Craft House
Clyde Road, Menora
Mail: P.O. Box 446 INGLEWOOD WA 6932
Email: Information & Publicity Officer
candacegibson@yahoo.com



**Celebrating 60 years
1957 to 2017**

Dates for your diary

Saturday 9 September	Guild Annual Showcase: Diamonds and Gems (p. 4)
Tuesday 12 September or Wednesday 13 September	Royal Show entries must be submitted (p. 13-14)
Saturday 23 September	Spinning Day, APCH, from 10am Spinning study group (APCH Studio)
Saturday 23—Saturday 30 September	Perth Royal Show
Saturday 14 October	HWSDGWA General Meeting, APCH, from 10am Pop up demonstration: knitting with beads
Saturday 28 October	Spinning Day, APCH, from 10am Spinning study group (APCH Studio)
Saturday 11 November	HWSDGWA General Meeting, APCH, from 10am and Christmas lunch (more details to follow)
Saturday 25 November	Guild library and equipment stocktake 10am Spinning study group (APCH Studio)
Saturday 9 December	Indoor picnic at APCH—All welcome. Bring your latest project and your own lunch and refreshments, from 10am
Saturday 20 January 2018	Spinning at Matilda Bay (details to follow)

CANCELLED: August/September weaving workshop

Please note that the weaving workshop planned for 27 August, 10 September and 24 September has been cancelled.

For more information contact Candace Gibson on 0424984883 or email candacegibson@yahoo.com



Guild Annual Showcase 2017

Theme: Diamonds and Gems

Saturday 9 September



The countdown is on to the Guild Annual Showcase 2017. In honour of the Guild's diamond jubilee, this year's theme is DIAMONDS AND GEMS. We are looking forward to a spectacular Diamond Jubilee display!

On the day....

09:30	Doors open
10:00-10:30	Entries received - absolutely no entries accepted after 10:30
11:00-11:45	General Meeting
12:00	Soup Time
12:30-12:45	Popular Choice voting
13:00	Award announcements

Some things to keep in mind....

Two items can be submitted per member per category.

Items cannot be entered in multiple categories.

The item must have been completed within 12 months of the entry date.

Entrants are encouraged to attach an artist's statement to their entries, using the year's theme as inspiration if possible.

Entries can be marked as not for judging if desired.

Items must be submitted and prepared for Judging between 10:00 and 10:30am on the competition day.

Categories and prizes....

WEAVING:

- Off loom weaving
- 2 Shaft, Rigid Heddle, or inkle loom weaving
- Multishaft manual loom weaving (excl computerised, mechanical, dobby-type looms)

Each of the above sections receives a certificate, and prize money or voucher.

Judge to decide the best overall entry. The member submitting that entry then receives the **LYN WARING TROPHY**

DYEING:

Natural or chemical dyes permitted. Entry may be a skein or item of commercial or handspun fibre and will be judged on the quality of dyeing only. Judge to select the best entry, which receives a certificate and prize money or voucher.

Continued on the next page...



SPINNING:

“Skein and Swatch”- A skein, along with a minimum 10 X 10 cm swatch, made from handspun fibre, with attached sample and description of fibre and intended use. Entries may be:



- 5 ply and under (14wpi or more)- minimum skein 25gr
- over 5 ply (less than 14wpi)- minimum skein 50gr

Each of the above sections is to receive a certificate, and prize money or voucher. Judge to decide the best overall entry. The member submitting that entry then receives the **CECILE DORWARD TROPHY**

FELTING:

Judge to select the best entry, which receives a certificate, prize money or voucher, and the **BARBARA FREW TROPHY**

KNITTING/CROCHET:

Any handstitched item made from Handspun yarn, spun by the entrant. Judge to select the best entry, which receives a certificate, and prize money or voucher.

MIXED MEDIA:

An item made using predominantly any, or a mixture, of the core crafts of weaving, spinning, dyeing or felting, which can include any material, including (but not restricted to) recycled or up-cycled materials. The item can be in any form from garment, decorative, domestic, to sculptural. To be judged by all Judges together. Best entry receives certificate, and prize money or voucher.

NOVICE/JUNIOR:

Any item as per above categories, made by a first-time entrant or member under 18 years of age. Judges are to select the best Novice entry together, which receives a certificate and prize money or voucher.

PRESIDENTS AWARD:

An entry chosen by the President of the day receives a certificate, prize money or voucher and **JOY SKINNER TROPHY**.

POPULAR VOTE:

Members are to cast a vote for their selection. Votes are to be counted and the winner announced. Winner receives certificate and prize money or voucher and **ANNE RAIN TROPHY**

Continued on the next page...



PATRONS CHOICE:

Patron to select their favourite entry, which receives a certificate, and prize money or voucher.



GROUP or COLLABORATIVE ENTRY:

A group entry is to be a single item or cohesive set of items showcasing any mixture of the Guild's core crafts of weaving, spinning, dyeing or felting, where a group is defined as three or more individuals (who do not need to be an official Guild group). Items may also be partly crocheted or knitted. Note: items entered as a group entry CANNOT be also entered individually. To be judged by all Judges together. Best entry receives certificate, prize money or voucher and **TURNER COTTAGE TROPHY** (donated by Frank and Isobel McKay).

And on a sad note....

In July 2017 Isobel McKay passed away at Eton Farm, aged 85. Frank and Isobel McKay donated the Turner Cottage Trophy to the Guild, which is awarded each year for best group or collaborative entry. She is survived by five children, 13 grandchildren and 19 great grand children.

The Turner Cottage Trophy is named after Turner Cottage, a farmhouse in Serpentine, located on land once known as 'Bridge Farm'.

Bridge Farm was first surveyed in 1849 and granted to Francis Armstrong, one of the Swan River Colony's first settlers. It was then sold to ticket-of-leave man James Brown, who built the first hut on the land. Alfred Martin then purchased the property for his sister Elizabeth, who married Edward Turner in 1854. Edward was the local Postmaster, and the Turners produced wheat, fruit, fodder, milk and butter and provided a changing station for the mail coach.

When Edward died in 1873 Elizabeth continued to farm on a subsistence basis. When she died in 1902 and the property passed to her son Harry Turner, and in turn to his son Claude in 1946. Claude let the cottage and leased the land .

The cottage became overgrown and fell into disrepair until 1957 when the Shire condemned it for habitation. In the succeeding years it was vandalised. In 1965 Isobel and Frank McKay purchased the cottage and some of the land, and in 1978 they began the cottage. By this stage the chimneys, mantelpieces and some flooring were gone. Around 13,000 new sheoak shingles had to be cut for the roof. The work was completed by 1980, and the name changed from 'Bridge Farm' to Turner Cottage.

Isobel McKay undertook detailed research on Bridge Farm and in 1988 published *From Bridge Farm to Turner Cottage*, a book about the farm's history.

From the President

Another busy month and it is not over yet. By now I hope you have all let the Toodyay Spinners know if you will be joining them for the Spin In on Saturday 26 August (9:30am to 2:30pm in the Sports Pavilion at the Toodyay Showgrounds). I am looking forward to seeing you all there.

In 2016 and early 2017 it was confirmed that there had not been a rise in the fees charged by the APCH to the groups and therefore there was no commensurate rise in group fees to members. At that time I mentioned to members the possibility of a small rise in membership fees in 2018 and at the last APCH meeting this was passed by the Committee. Each time period (day or half day) now attracts an extra \$2 fee and the cost of group membership has also risen by \$25 in our case. These rises are small but do add up as we are one of the largest users and your Committee will be discussing the possibility of a small rise in fees for 2018. The costs to APCH have gone up and it is reasonable that these are passed on. We will let you know what arises from those discussions.

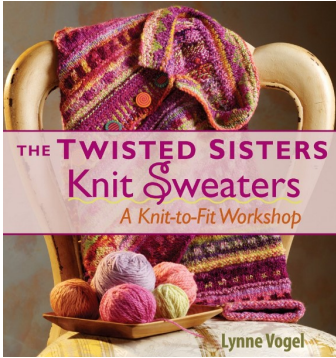
We were given a double stand at the WA Craft Show in Claremont and it went extremely well. The stand was often packed with the curious and the entranced and we have already had some ladies visit our meetings after seeing the demonstrations. Well done and a big thank you to our demonstrators: Helen Lovitt-Raison, Jo DeBaughn, Rachel Meissner, Mylene Pijpers, Bronwyn Croughan, Wendy Peace, Katherine Gayler, Helen Gladstones, Loraine Stokoe. Mareene Aitken, of True Blue Events, and her team did a great job and it was a wonderfully successful event and we were kept very busy. Well done everyone!

By now you will all be working away furiously on your Guild Showcase and Royal Show entries. We are all looking forward to the Showcase and seeing what you have all been up to. Don't forget your share plate! The Guild has had several members volunteer to assist as stewards at the Royal Show so it is likely that you will be seeing some familiar faces when you go and visit this years display.

See you all soon!

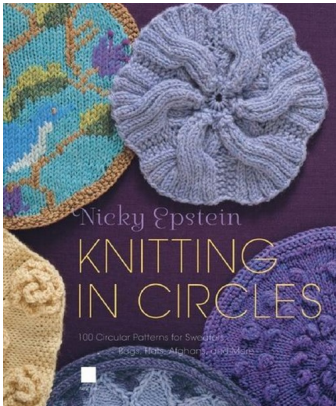
*Candace Gibson
President HWSGDGWA Inc.*

From the Library



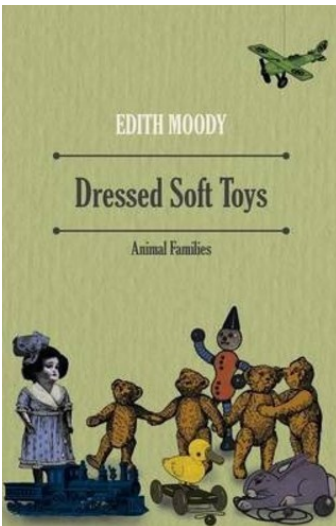
***The Twisted Sisters Knit Sweaters: A Kit-To-Fit Workshop* Lynne Vogel**

This book is based on a two-part method of sweater designing that lets you create patterns based on your own body measurements and yarn gauge. You will learn how to construct sweaters from the bottom up, top down, side to side or a combination of directions. You can also make successful variations to necklines, sleeves and shoulders, and how to add colour and stitch patterns, collars and edgings.



***Knitting In Circles* Nicky Epstein**

One circle can become a stylish hat or an adorable shrug. Two, and you have a unique handbag or cover-up. Knit more circles, and you can make showstopping scarves, jackets, sweaters, afghans - even a stunning lace dress. There are 100 circular patterns and 20 inspiring projects. You'll also find step-by-step techniques for how to knit circles, plus expert guidance on customizing the projects, with unique cut-and-paste circle templates to design your own styles.



***Dressed Soft Toys: Animal Families* Edith Moody**

This book aims to be a guide, with accurate patterns and clearly written instructions to ensure success when making Mr Pig, Mrs Bear, Ms Lamb and Miss Monkey. Individual expression and imagination can be used in the choice of materials for the clothes and in the set of the eyes, the tilt of the nose, or the line of a mouth.

Anne McAdam

Sharing Table—Saturday 22 July



At the July Spinning Day we saw work of beautiful craftsmanship.

Kjerstin Bjelland brought two beautiful shawls which used plain weave to show to best advantage her homespun yarns. One was alpaca, grey with a black stripe, The other subtle colours in wool and silk.



Rae Flanagan brought her first ever skein of alpaca. Well done!



Helen Lovitt Raison spun Merino/Rose 8 ply was lucky to get there as her wheel gave up in the middle and had to be plied on a friend's wheel.



Sue Greig brought a beanie knitted in sock yarn and a very attractive set of



table mats and table runner woven in rose-path and plain weave destined for a wedding present.

Thanks to members for sharing their work with us.

Brenda Roy

Wise Owls...

*I too will something make
And joy in the making.*

Robert Bridges
(contributed by Ann Bancroft)

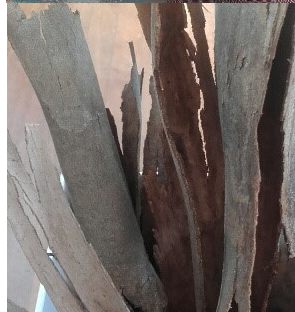


Sharing Table—Saturday 12 August

More beautiful work was shared this month to inspire us.



Marg P.C. had brought her three tea towels from the woven tea towel exchange some of us participated in. These three by different NSW guild members are a good example of the beauty to be used and treasured in the kitchens of some weavers. Marg also brought three beautiful airy woollen batts dyed with bark fallen on her driveway. The resultant russet colour echoes her original hair colour she says.



Gail Hamilton showed a wonderfully soft Heartstrings shawl knitted from Dingo Dyeworks Merino/silk.



Rae Flanagan lit up the table with her vibrant, crocheted shawl of flowers.



Kjerstin Bjelland has been playing with log cabin threading and produced gorgeous scarves and shawls in wool, silk and alpaca, some handspun and hand dyed along with one in wool and silk demonstrating the lovely simplicity of plain weave.

Continued on the next page...

Helen Lovitt brought along a beautiful knitted shawl and a skein of "Blossom Bunny", her first spinning on her new wind wheel.

From **Guiliana Bond** came a "smallstash" project for an Online Guild Workshop. Her little scissor case was woven tapestry style on a small lateral loom from left over yarns, mostly handspun, and embellished with a dorset button.



Brenda Roy



From the Yarn Area

NEW:

- ◇ Luscious hand dyed tops and 3D Turkish Spindles by Jessica Berriman
- ◇ Interesting hand made drop spindles and Turkish spindles by local craftsman Collin Correia
- ◇ Large selection of cotton yarns and sock yarns for knitters and weavers

PLUS we have lots more to check out:

- ◇ Support and Turkish spindles and support bowl from Frank Williams
- ◇ Hand dyed silk/merino tops (50/50) by "Dusty Roads"
- ◇ Threads for weavers
- ◇ Kumihimo discs
- ◇ Large selection of yarns suitable for socks and fantastic for weavers
- ◇ Cones of Tencel, wool blend and cotton in a gorgeous selection of colours
- ◇ Knitting accessories
- ◇ Treetops - Perth, Heavenly Wools - NZ, First Edition - merino silk - Vic, Space Cadets arty batts - WA
- ◇ Hand dyed silk rovings, cocoons & rods
- ◇ Rovings and 4 ply cotton from Bendigo Woollen Mills - Victoria
- ◇ Alpaca rovings and small packs of fleece, all in natural colours - Perth
- ◇ Melanian wool rovings in natural colours - WA
- ◇ Hand turned drop spindles by Franks Williams - NSW
- ◇ Landscape dye colours
- ◇ Large selection of other fibres (undyed) to try

There are many treasures in the cupboards that can't fit on the tables—come behind and have a look!

Happy spinning, weaving and dyeing—Sue & Jo

Come up to my room....

The Gladstone Hotel is Toronto's oldest continually operating hotel, and provides a unique place to stay. The hotel is actively involved in its local community, and prides itself on 'facilitating new ideas, creative expression, collaboration, and new ways of experiencing art, culture and community'.

Each year the Gladstone Hotel partners with community organisations and arts curators, producing many exhibitions and programs. Come Up to My Room (CUTMR) is one of these – every year over four days artists and designers are invited use the hotel rooms as a blank canvas for their ideas.

For CUTMR in 2005 Allyson Mitchell created the 'Granny Square Rec-Room' – some great stash busting ideas here! It turns out there's no such thing as too much knitting and crochet when it comes to interior design.

Source: www.gladstonehotel.com/, <http://comeuptomyroom.com/>, <http://knithacker.com/>





Lost and found!

Did you lose this earring at the Spin In? If so, please contact Cecilia Jordan (ceciliajordan@rocketmail.com or 0406 506 941) to arrange its return.



Yarn-bombing spotted by Sue Greig outside the Vincent library on corner of Vincent and Loftus streets.

Perth Royal Show 2017

Thank you to everyone who has taken the time to craft and enter articles in 2017 RAS.

Your Creative Craft Competition Entries need to be delivered to the Ellie Eaton Pavillion [near the main gate] on...

- Tuesday 12 September 2017 between 7.00am and 4.00pm OR
- Wednesday 13 September 2017 between 8.00am and 6.00pm

Entries can be collected after the Show from the same location, on...

- Sunday 1 October 2017 between 11.00am and 1.00pm
- Monday 2 October 2017 between 7.00am and 6.00pm

AWARDS:

Prize cards awarded for 1st, 2nd, 3rd, Highly Commended and Special Prize are distributed within six (6) weeks of the conclusion of the Show. All prize money is paid by Electronic Funds Transfer. If you have not received your award before 30 November 2017 please contact the RAS Awards Officer on 6263 3100. If the matter is not resolved please contact June at Bilby Yarns 9331 8818 or seek assistance from your HWSD Guild committee.

Continued on the next page...

Perth Royal Show 2017

...continued from the previous page.

Your RAS representative, Janet Allsworth, will not be available before, during or after the show. If you have a problem with your entries, delivery or collection, please don't hesitate to contact June at Bilby Yarns 9331 8818 or seek assistance from your HWSG Guild committee.

RAS NOTE:

The Melanian Sheep Breeders' BLACK SHEEP SHOP and fleece stall is normally in the Jim Horwood Sheep Pavillion near gate 8. This year we have been removed to accommodate the Yellow Brick Road stall. However, our competition fleece will still be there in the fleece display cabinets and we will leave a sign (in the fleece) to indicate the new location (currently, RAS are discussing the possibility of sending us to district display/Walk through WA pavilion).

Craft Entry Reminders for Perth Royal Show

- All work must have been completed with 18 months prior to the show and must be the bona fide work of individual exhibitor.
- The work must not have been exhibited previously or have been altered and re-entered. Only one item can be entered in each class.
- No item should bear the Exhibitor's name, advertising logo or any other identification mark, except the Society's exhibit number slip, which must be securely sewn or attached in an appropriate manner on the front of each article.
- Any exhibit incorrectly entered will be marked 'NOT ACCORDING TO SCHEDULE', and will not be judged nor be eligible for a prize.
- Except where it is an acceptable part of the finishing, (ie fulling/pre-shrinking of fabrics/felt) exhibits that have been washed or dry cleaned will be disqualified from competition. Stained or soiled articles are not eligible to be entered.
- Exhibitors may submit any information, which may be of value to the Stewards or of interest to the public.
- For handspun skeins, a sample of fibre and notation as to 'intended use' should be marked on cards attached to skein.
- If you send in personal items for display purposes such as hangers, boxes etc. or special carry bags, there is no guarantee they will be returned.

For more information contact June Lynn (9310 2161 or bilbyarn@tpg.com.au).

Office Bearers and Convenors for 2017

COMMITTEE

PRESIDENT	Candace Gibson	0424984883	candacegibson@yahoo.com
VICE PRESIDENT 1	Rachel Meissner	0439595928	rmeissner07@gmail.com
2	Janet Allsworth	9407 9025	clem.allsworth@bigpond.com
TREASURER	Charmaine Pedrick (Intern Avril Liljekvist)	0401342278	pedrickc62@gmail.com
SECRETARY	Nicolea Savage	0409105705	nicoleap@bigpond.com
	Gail Hamilton	0438382739	gburchell1@bigpond.com
COMMITTEE 1	Kat Sherwin	0404147608	thorhammer24@hotmail.com
2	Avril Liljekvist	0449001103	ceilee@hotmail.com
3	Marina Watts	9389 1557	marina.watts13@gmail.com
4	Helen Dunn	0408800674	helen.dunn59@live.com.au
5	Jenni Talbot	0488941751	jennitalbot@outlook.com

CONVENORS

INFORMATION & PUBLICITY	Candace Gibson	0424984883	candacegibson@yahoo.com
LIBRARIAN	Anne McAdam With Anne Bancroft (Intern Joanne Peate)	6460 2102	Anne.mcadam111@gmail.com
YARN AREA	Sue Greig	9448 0840	sue_greig@hotmail.com
	Jo Rhodes	9561 5776	jorhodes@iinet.net.au
EQUIPMENT HIRE	Sue Greig	9448 0840	sue_greig@hotmail.com
YARNSPINNER	Cecilia Jordan	0406506941	ceciliajordan@rocketmail.com
EDITOR			
MEMBERSHIPS & YARNSPINNER DISTRIBUTION	Helen Dunn	0408 800 674	helen.dunn59@live.com.au
RAS	Janet Allsworth	9407 9025	clem.allsworth@bigpond.com
REPRESENTATIVE	Assisted by June Lynn	9310 2161	bilbyarn@tpg.com.au
ARCHIVES	Alaine Haddon-Casey	9383 7603	scasey@iinet.net.au
COMMUNITY	Candace Gibson	0424984883	candacegibson@yahoo.com
ENGAGEMENT & EVENTS	(Intern required)		
SPEAKERS & POP-UP WORKSHOPS	Alaine Haddon-Casey	9383 7603	scasey@iinet.net.au
WORKSHOPS	Candace Gibson (Intern-required)	0424984883	candacegibson@yahoo.com
HOUSEKEEPER	Lorraine Stokoe	0428498521	wrx2002@iinet.net.au
SHARING TABLE	Margaret PC	9403 0394	kynox@bigpond.net.au
	Brenda Roy	0437904223	brenda@cadplan.com.au
	With Sandra Melville & Kat Sherwin		
WEBSITE EDITOR	Candace Gibson	0424984883	candacegibson@yahoo.com
APCH	Janet Allsworth	9407 9025	clem.allsworth@bigpond.com
REPRESENTATIVE	(Intern required)		
PATRON	Mrs Ruth Reid		
AUDITOR	David Williams		

FOR SALE

- **Alpaca Fleece:** Lovely soft luxurious natural colour alpaca fleece. Please let me know the colour and quality you'd like so I can hand pick a fleece. Email Carolyn at emerys5@westnet.com.au or contact Jo Rhodes 0414 782 277
- **Ashford Traditional spinning wheels:** Two wheels available, plus some extra bits and pieces. \$175 each. Contact Walter Wallenborn 0419 937 499 (Mundaring)
- **Treadle sewing machine:** Singer brand, 104 years old, from Glasgow. \$600. Contact Jane McCrea 9446 1065 or platypus@iinet.net.au
- **Warping Board:** Handmade, probably 50 years old, sturdy and reasonable condition \$30 Contact Tracy Barker 0418 946 972 or tracy@barkerandhale.com.au

Guild members can advertise in the YarnSpinner events or items for sale at no charge.

Non members may advertise but must pay \$5 per line, in advance. Contact the editor at the Guild address or by email as on page 15.

Advertising deadline for October Yarnspinner: Saturday 9 September



*"Well here's your problem.
This isn't a lace chart, it's a
Sudoku."*

Source: *"It itches."* by Franklin
Habit

Front cover: Tools used during a pop-up workshop on wool combing given by Niclolea Savage at the Guild General Meeting day on 12 August (note the ingenious home made wooden spoon diz!)